



[800] 979.2020 • [610] 889.0200 • FAX [610] 889.3233 • info@accutome.com • www.accutome.com

Total Solutions Provider for all of your ophthalmic needs.

ACCUTOME SURGICAL

Diamond Knives, Steel Knives, Sutures and Handheld Surgical Instruments.

ACCUTOME CLINICAL

Office Medications and Supplies.

ACCUTOME DIAGNOSTIC

A-Scans, B-Scans, Pachymeters, Tonometer and UBM.

ACCUTOME REPAIR CENTER

- Quick turnaround for most brands of Diamond Knives and Handheld Instruments.
- Diagnostic Equipment.

ORDERING

Call toll free [800] 979.2020 US and Canada
[610] 889.0200 International
+31 [0] 485.350300 Europe
Monday thru Friday 8:30AM - 8PM EST
Fax: [610] 889.3233
Email: info@accutome.com
Web: www.accutome.com

SHIPPING

Ground - Via UPS Ground Service
Air - Via best method

Saturday - Orders must be placed before 3PM EST
Friday to ensure Saturday delivery.

Payment should be made by check, Bank Transfer, Visa,
MasterCard or American Express.

CONTACT US



WATCH RESOURCES

youtube.com/c/accutome



LIKE US

facebook.com/pages/Accutome-Inc



TWEET US

twitter.com/accutome



FOLLOW US

linkedin.com/company/accutome-inc



GOOGLE+

plus.google.com/+Accutome/



Distributed by:

Rev -



Accutome Connect™

A-SCAN • B-SCAN • UBM





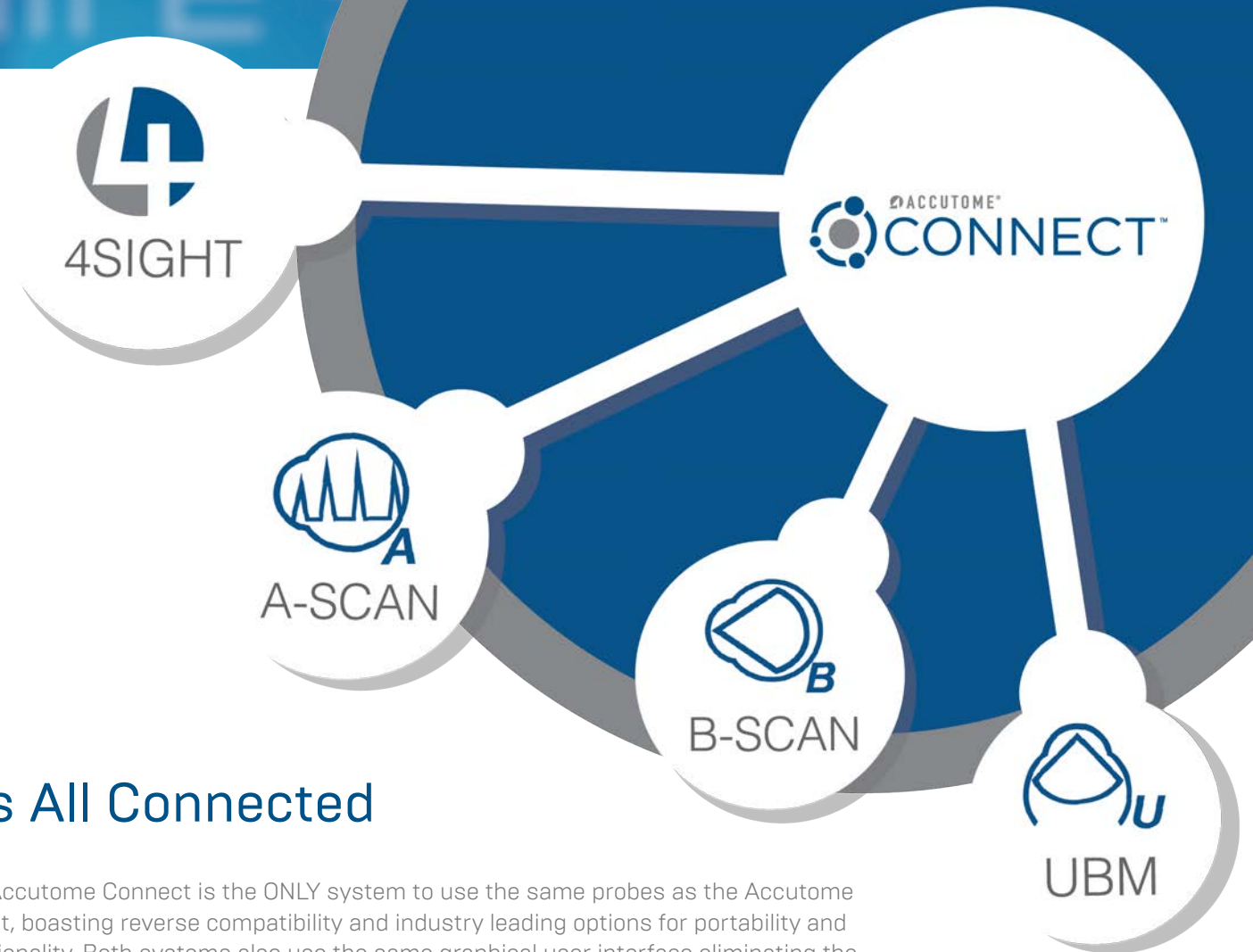
Accutome Connect™

Introducing the brand new Accutome Connect – a single application solution for managing your ultrasound patient workflow, including A-Scan, B-Scan and/or UBM.

The Accutome Connect is a powerful and portable diagnostic tool designed to meet the demands of today's ophthalmic practice. The A-Scan console, B-Scan and UBM probes plug directly into a PC, laptop or tablet device and offer flexible data transfer to meet your clinical needs. All patient data is easily uploaded to electronic medical

records and can be stored, emailed or printed quickly. Reports are generated with just a few clicks of a button. Take the Connect anywhere with no software licenses, allowing you to load the Connect software in multiple exam rooms and/or offices.

Protect your investment with easily upgradeable software and streamline your patient data by sharing information between each system.



It's All Connected

The Accutome Connect is the ONLY system to use the same probes as the Accutome 4Sight, boasting reverse compatibility and industry leading options for portability and functionality. Both systems also use the same graphical user interface eliminating the learning curve and making the transition seamless when switching from one system to the other.

We Are Here To Stay

Accutome is entering our fourth decade in the ophthalmic industry. Our history of innovation started in the 1980s with the development of the first ophthalmic pachymeter. Today we feature an industry leading lineup of products including the 4Sight®, A-Scan Plus Connect®, B-Scan Plus®, UBM Plus®, PachPen®, AccuPach VI® and AccuPen® handheld tonometer. We continue to grow and expand on our legacy of achievements with new products that guarantee that we will be here to serve you in the future. All products are made and serviced in the USA.

We are part of the Halma Group of Ophthalmic Companies which includes Keeler, Volk, Medcel, MST and Visiometrics.

With Accutome, you are not just buying equipment, you get our world-class customer service and support.

We Place a Priority on Training Your Staff

An onsite instruction program is offered with every purchase of an A-Scan Plus Connect, B-Scan Plus or UBM Plus. Our dedicated Product Specialists will walk your team through the technology and software so that you get optimum results using the Connect.

Worry-Free Warranties

Accutome's A-Scan Plus Connect, B-Scan Plus, and UBM Plus come with a 3-year base warranty. Extended warranties are available upon request.

A-Scan Plus Connect[®]

Item# 24-4400

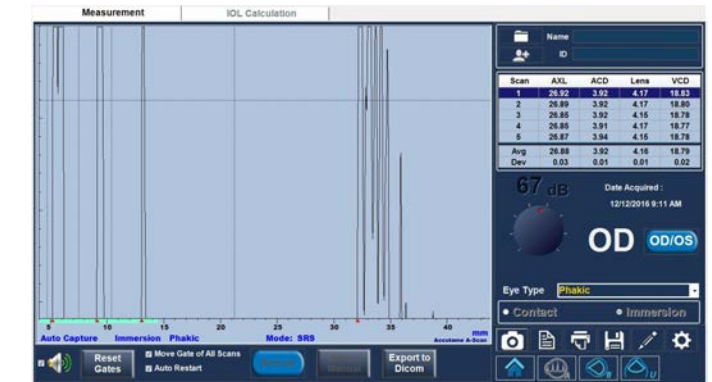
Features

- Immersion and contact modes
- Industry leading resolution
- IOL formulas including the Hoffer[®] Q, SRK/T, Holladay I, Haigis, SRK II, Binkhorst II, as well as new post-refractive formulas
- Customizable lens, ACD and VCD materials for new emerging implant/chamber materials
- Optimized lens constants for superior surgical outcomes
- Easy to set up defaults, smooth customer interface and automatic EMR exports to decrease examination time, increase patient throughput, and increase profit
- Automatic alignment detection and sclera recognition help eliminate marginally aligned scans
- Seamless work flow integration with IOLMaster[®] 500 from ZEISS[™]
- Fully upgradeable software
- Unlimited data storage based on PC/network storage
- EMR capability with automatic transfer of data
- DICOMSM ready
- Unlimited IOL Lens groups
- Piggyback calculation ability for ICL implant patients
- Rx surgery calculations for an aging Lasik population
- PC based platform
- PDF reporting



Improved Efficiency

Easy-to-use interface for fast scan capture



Trusted Accuracy

Trusted reliability and accuracy with our industry leading resolution

Specifications

Weight	0.43 Kg (15.1 oz.)
Dimensions	13.75 cm X 9.50 cm X 6.40 cm (5.4" x 3.7" x 2.5")
Methods	Immersion or Contact
Default Eye Type Settings	Phakic, Dense Cataract, Silicone Filled, Pseudo PMMA, Pseudo Silicone, Pseudo Acrylic, Aphakic
Custom Eye Type Settings	Unlimited with independent ACD, Lens, VCD velocities
Measurements	ACD, Lens thickness, VCD, Axial length
Capture Modes	Automatic or Manual
Frequency	10 MHz
Electronic Resolution	0.016 mm
Clinical Accuracy	0.01 mm
Data Points per Waveform	4096
Measurement Range	0.01-63.6 mm
Adjustable Gain	30-100 dB
IOL Formulas	Hoffer Q, Holladay I, SRK/T, Haigis, SRK II, Binkhorst II
Post Refractive Formula Methods	Clinical history, Contact Lens, Shammass Clinical
IOL Data Storage	Unlimited
Patient Data Storage	Unlimited
Data Export	EHR compatible, Network ready
Printer	Any supported by PC
Accessories	USB foot switch, CD containing A-Scan Plus Connect software and manual, test block



B-Scan Plus®

Item# 24-6100

Features

- Superior image – 0.015 mm image resolution is among the highest in the medical industry
- Probe Design – Sharper, more focused images due to the elimination of signal loss
- Unsurpassed Data Analysis – Contains 12 useful measuring calipers
- “Smooth Zoom” Technology – The only unit with 2x full image zoom without distortion of real-time or captured scan
- Adjustable Video Loop
- Easy to set up defaults, smooth customer interface and automatic EMR exports to decrease examination time, increase patient throughput, and increase profit
- Fully adjustable gain-control before, during or after scan
- Unsurpassed compact file storage
- Fully upgradeable software
- EMR compatible
- DICOMSM ready
- Multiple measuring velocities for ACD/VCD
- PDF reporting
- Data archive – network or external location

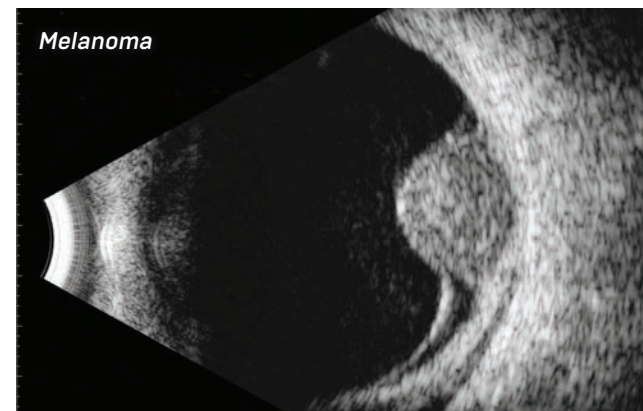


Specifications

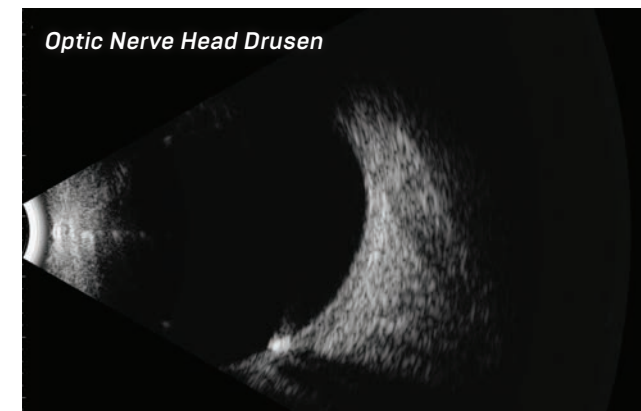
Weight	6 oz.
Dimensions	7" long X 1.25" diameter
Frequency	12 or 15 MHz
Axial Resolution	0.015 mm Electronic
Lateral Resolution	0.085 mm Electronic
Gain	0-112 dB
Adjustable Gamma	Linear, S-Curve, Log, Color
Scanning Angle	60°
Field of View	12 MHz = 64 mm or 15 MHz = 52 mm
Frame rate per Second	15, 30 max
Sampling Rate	2048 (points per line)
Vectors per Frame	256
Focal Point	22 mm
Focal Zone	20 mm
TGC	Yes
Frozen Image Gain Adjustment	Yes
Zoom	2x optical zoom, 8x Maximum
Reports	Integrated Microsoft Word™
Snapshot format	jpeg, bmp, png, tiff, gif
Data archive/ Export capability	Yes
Max. number of frames per scan	256
Size of cine loop	16-128 MB
Measurement Calipers with velocity adjustment	4 line, 2 area, 2 angle
Accessories	Durable traveling case, Probe holder, foot switch, wireless mouse



Vitreous Hemorrhage in Vitrectomized Eye With Visible Peripheral Vitreous Skirt



Melanoma



Optic Nerve Head Drusen



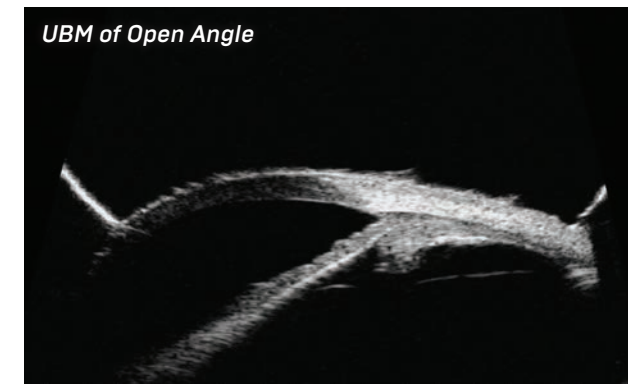
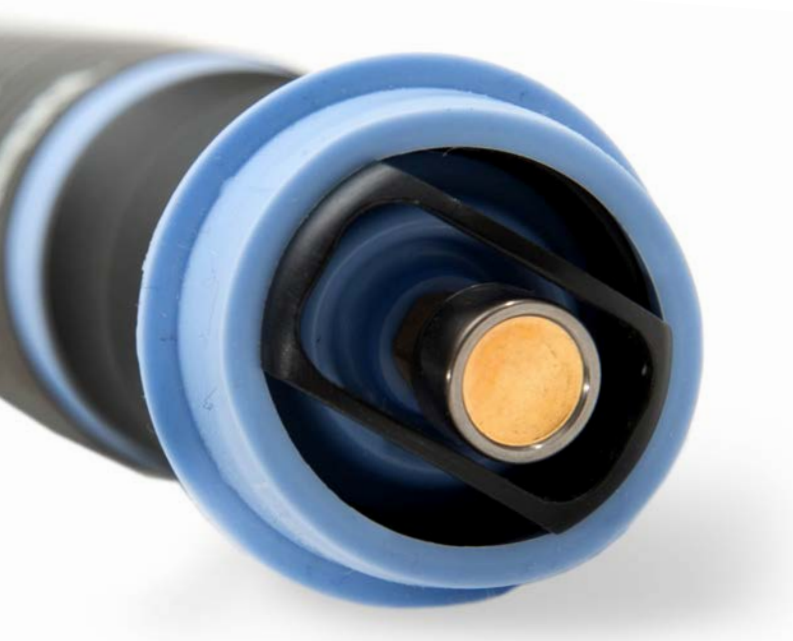
Dense Vitreous Hemorrhage

UBM Plus[®]

Item# 24-6300-G

Features

- High Definition Imaging - Detailed structure definition including cornea, iris, ciliary body, zonules, crystalline lens and intraocular lens, as well as pathologies
- State-of-the-Art Probe Design - Sharper, more focused images due to the elimination of signal loss
- Unsurpassed Data Analysis - Contains tools for measuring sulcus-to-sulcus, anterior chamber depth, positioning of intraocular lenses and filtration angle of the eye
- Easy to set up defaults, smooth customer interface and automatic EMR exports to decrease examination time, increase patient throughput, and increase profit
- Adjustable Video Loop
- Fully upgradeable software
- EMR compatible
- DICOMSM ready
- Multiple measuring velocities for ACD/VCD
- PDF reporting
- Fully adjustable gain-control before, during or after scan
- Data archive: network or external location



Specifications

Weight	6 oz.
Dimensions	7" long X 1.25" diameter
Frequency	48 MHz
Axial Resolution	0.015mm Electronic
Lateral Resolution	0.05 mm Electronic
Gain	0-112 dB
Adjustable Gamma	Linear, S-Curve, Log, Color
Scanning Angle	30°
Field of View	32 mm
Frame Rate per Second	10
Sampling Rate	2048 (points per line)
Vectors per Frame	256
Focal Point	13 mm
Focal Zone	4 mm
TGC	Yes
Frozen Image Gain Adjustment	Yes
Zoom	8x Maximum
Reports	Integrated Microsoft Word TM
Snapshot format	jpeg, bmp, png, tiff, giff
Data archive/ Export capability	Yes
Max. number of frames per scan	256
Size of cine loop	16-128 MB
Measurement Calipers with velocity adjustment	4 line, 2 area, 2 angle
Accessories	Durable traveling case, Probe holder, foot switch, wireless mouse, 18 mm & 20 mm Immersion shells